

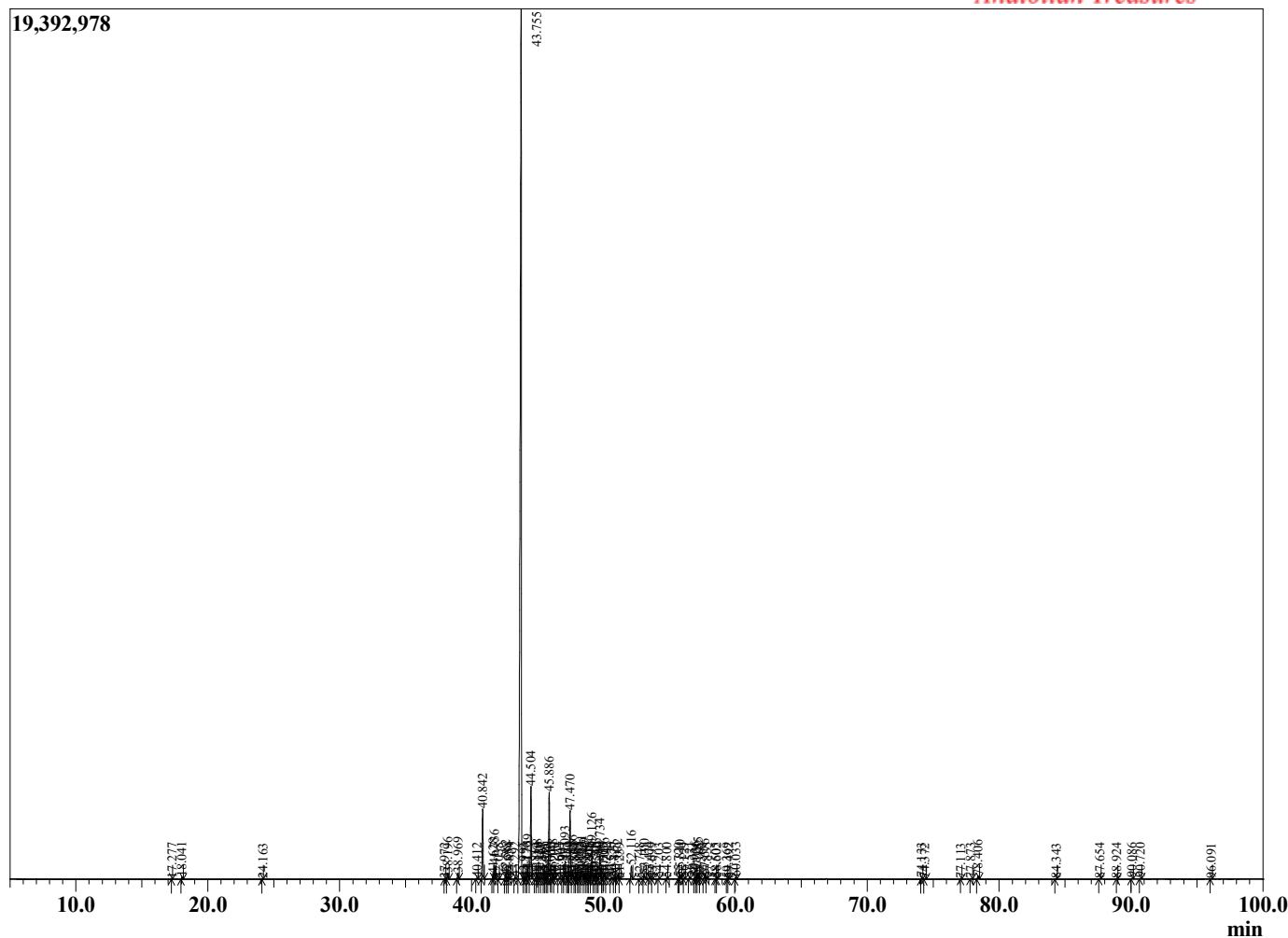
Sample Information

Sample Type : Essential Oil
 Sample Name : *Copaifera langsdorffii*
 Injection Volume : 0.10

Copaiba
 Lot# SMN14-NK
 Country: South America



Chromatogram *Copaifera langsdorffii*



R.Time	Name	Area%
17.277	para-Menth-1-ene	0.01
18.041	cis-beta-Ocimene	0.08
24.163	allo-Ocimene	0.01
37.972	Elemene isomer	0.03
38.196	delta-Elemene	0.31
38.969	alpha-Cubebene	0.32
40.412	alpha-Ylangene	0.05
40.842	alpha-Copaene	3.70
41.628	beta-Cubebene	0.27
41.736	beta-Elemene	0.74
42.038	Unidentified	0.01
42.582	Cyperene	0.22
42.688	cis-beta-Caryophyllene	0.09
42.854	alpha-Gurjunene	0.02
43.292	cis-alpha-Bergamotene	0.08
43.755	trans-beta-Caryophyllene	68.62
43.993	Unidentified	0.06
44.170	Unidentified	0.05
44.259	gamma-Elemene	0.54
44.504	trans-alpha-Bergamotene	4.87
44.814	Aromadendrene	0.03
44.968	cis-beta-Farnesene	0.21
45.120	Unidentified	0.04
45.367	epi-beta-Santalene	0.07
45.481	trans-Murrola-3,5-diene	0.03
45.615	Unidentified	0.01
45.741	trans-beta-Farnesene	0.15
45.886	alpha-Humulene	4.80
46.012	Sesquibabinene	0.01
46.148	Alloaromadendrene	0.20
46.290	cis-Muurolo-4(14),5-diene	0.01
46.604	Unidentified	0.04
46.907	trans-Cadina-1(6),4-diene	0.07
47.093	gamma-Muurolole	1.01
47.267	gamma-Curcumene	0.07
47.370	alpha-Amorphene	0.06
47.470	Germacrene D	3.65
47.646	trans-beta-Bergamotene	0.44
47.834	delta-Selinene	0.03
47.952	beta-Selinene	0.22
48.095	Viridiflorene	0.06
48.165	trans-Murrola-4(14),5-diene	0.10
48.351	Bicyclogermacrene	0.54
48.549	alpha-Muurolole	0.28
48.687	alpha-Bisabolene	0.17
48.809	delta-Amorphene	0.05
48.916	Unidentified	0.07
49.126	beta-Bisabolene	1.65
49.301	cis-gamma-Bisabolene	0.23
49.423	gamma-Cadinene	0.28
49.540	Cadinene isomer	0.03
49.734	delta-Cadinene	1.37
49.960	cis-Calamenene	0.03
50.076	beta-Sesquiphellandrene	0.36
50.242	trans-gamma-Bisabolene	0.05
50.570	trans-Cadina-1,4-diene	0.06

R.Time	Name	Area%
50.827	alpha-Cadinene	0.09
51.072	transalpha-Bisabolene	0.27
51.239	Unidentified	0.02
52.116	Germacrene B	0.70
52.748	Unidentified	0.03
53.100	Caryophyllene alcohol	0.26
53.474	Caryophyllene oxide	0.10
53.699	Globulol	0.02
54.203	Viridiflorol	0.03
54.800	Ledol	0.04
55.720	Unidentified	0.05
55.810	Humulane-1,6-dien-3-ol	0.22
56.129	1-Epicubenol	0.05
56.521	Unidentified	0.07
56.936	tau-Cadinol	0.08
57.036	epi-alpha-Cadinol	0.16
57.185	delta-Cadinol	0.30
57.360	Unidentified	0.01
57.676	alpha-Cadinol	0.28
57.835	Unidentified	0.04
58.505	Unidentified	0.02
58.602	Unidentified	0.03
59.369	epi-alpha-Bisabolol	0.02
59.492	alpha-Bisabolol	0.02
60.033	Juniper camphor	0.10
74.133	Kolavelool	0.05
74.372	Unidentified	0.02
77.113	Unidentified	0.01
77.873	Manool	0.04
78.406	Unidentified	0.18
84.343	Unidentified	0.01
87.654	Unidentified	0.03
88.924	Unidentified	0.01
90.086	Copalol	0.05
90.720	Unidentified	0.04
96.091	Unidentified	0.01
		100.00